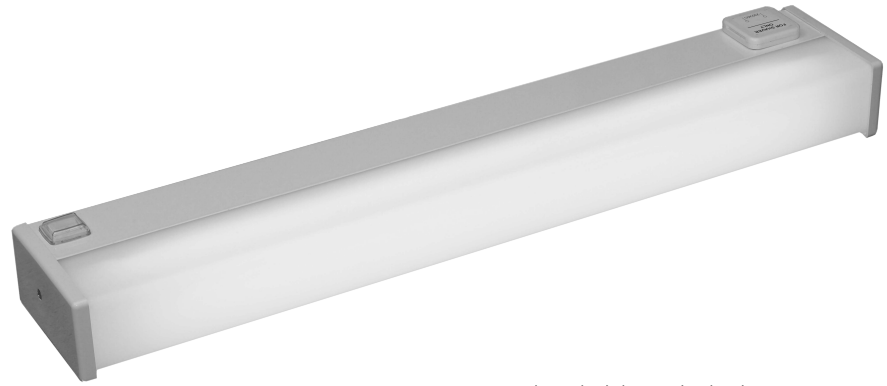


KJP 27 MLED



*socket and switch are optional equipment.

Type	Wattage	Light Source	Lumens	Weight
KJP 27-MLED320/108/...	1 x 8 W	LED	675 lm	1,5 kg
KJP 27-MLED500/108/...	1 x 8 W	LED	1145 lm	1,6 kg
KJP 27-MLED640/111/...	1 x 11W	LED	1250 lm	2,1 kg

Mirror luminaire, surface

Application

cabins, shower rooms, toilets, accomodation areas

Diffuser

PC, opal

Approvals

according to the rules of relevant classification societies, additional IEC

Electric

flexible wiring, heat resistant up to +105°C

Cable entry

2 inlets, cable max Ø 11 mm

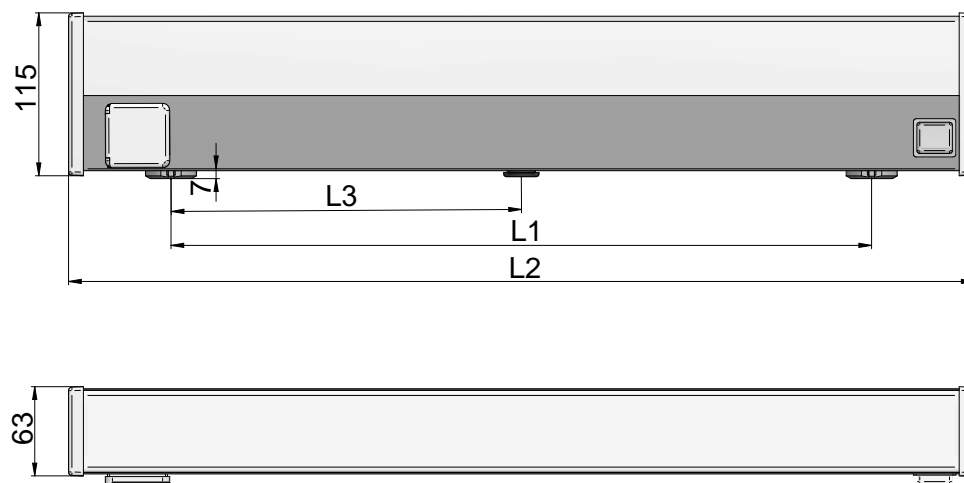
Housing

zinc coated steel,
powder coated white

Mounting

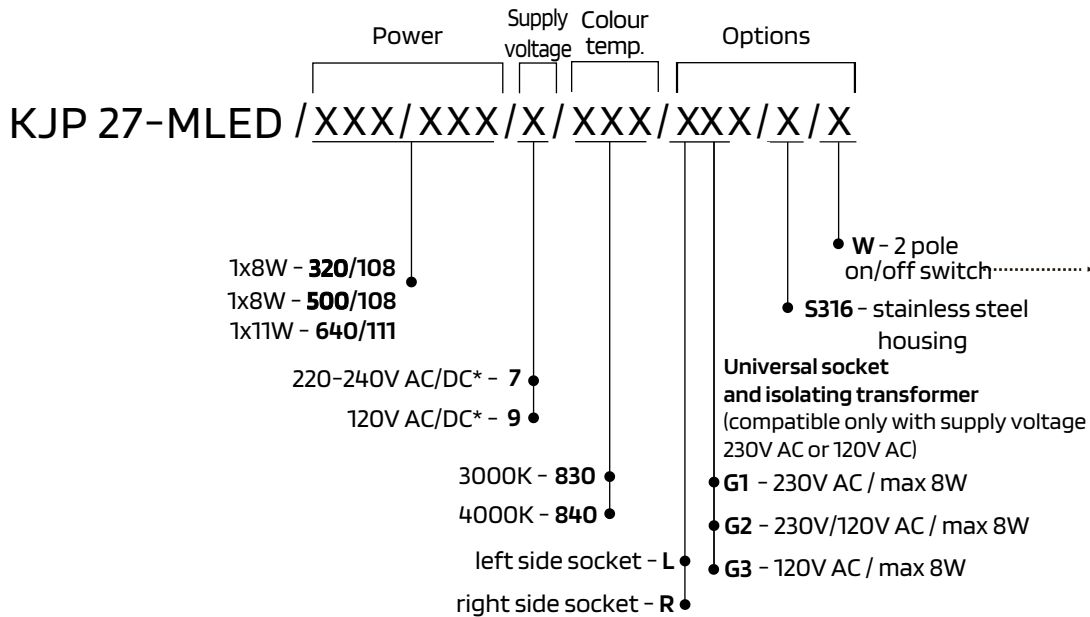
2 mounting holes Ø 6 mm

DIMENSIONS [mm]



Type	L1	L2	L3
KJP 27-MLED320	259	320	129,5
KJP 27-MLED500	420	500	-
KJP 27-MLED640	495	640	247,5

ORDER SPECIFICATION



* supply voltage must be 230V AC or 120V AC when G1, G2, G3 is ordered

*

Example of type description

KJP 27-MLED/640/111/7/830/LG1/W - light fitting with LED panel 1x11W; supply voltage 230V AC colour temperature 3000K; universal socket 230V AC on left side; 2-pole switch

TECHNICAL DATA

IP 44

220-240V
AC/DC



OPTIONS

120V
AC/DC