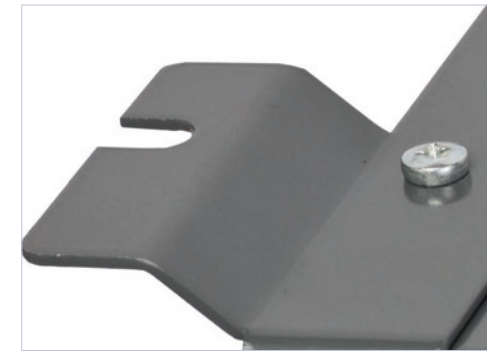


# TLP39 MLED

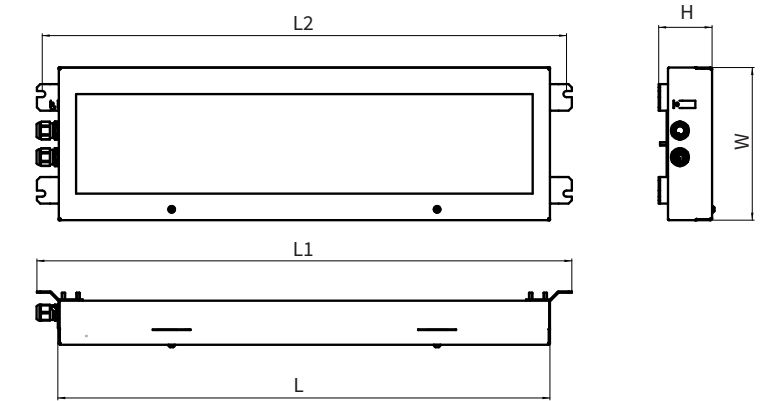


IP 66; LED; CLASS I



DIMENSIONS [mm]

Type	L	L1	L2	W	H
TLP 39-MLED210	462	528	508	230	80
TLP 39-MLED220	742	806	790	230	80
TLP 39-MLED230	1030	1096	1080	230	80
TLP 39-MLED240	1314	1375	1364	230	80



## APPLICATION

Dustproof and waterproof luminaire with energy-efficient LED light source. Designed to light industrial facilities such as production halls, collecting halls, workshops, heavy-duty industry (plants), electro-machinery, arms industry, food industry, warehouses, wholesalers, path ways etc..

### TECHNICAL DATA

Protection class:	I
Protection degree:	IP 66
Power factor:	≥ 0,95
Ambient temperature:	from -25°C to +45°C*
Power supply:	220-240V AC/DC
Lifetime:	> 50 000 h

\*ambient temp. for emergency version from 0°C to 40°C

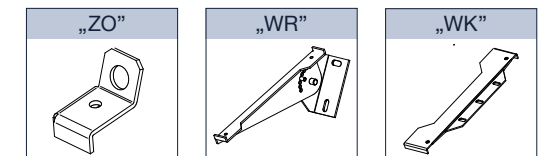
### ELECTRIC UNIT

Cable gland:	2 x M20
Cable diameter:	ø 8-13 mm
Terminal block:	3x4 mm <sup>2</sup>

Ending or through wiring.

TYPE	WATTAGE	LUMEN OUTPUT	WEIGHT
TLP 39-MLED210/7	9 W	1050 lm	4,0 kg
TLP 39-MLED210/11	11 W	1700 lm	4,0 kg
TLP 39-MLED210/16	19 W	2400 lm	4,0 kg
TLP 39-MLED220/22	25 W	2700 lm	7,8 kg
TLP 39-MLED220/29	32 W	3800 lm	7,8 kg
TLP 39-MLED220/33	39 W	4800 lm	7,8 kg
TLP 39-MLED230/44	47 W	5500 lm	9,2 kg
TLP 39-MLED230/49	52 W	7300 lm	9,2 kg
TLP 39-MLED240/58	62 W	8400 lm	13,0 kg
TLP 39-MLED240/64	72 W	9000 lm	13,0 kg

### ADDITIONAL EQUIPMENT



Eyelet sling: for TLP 39 MLED  
Flexible bracket „WR“: for TLP 39 MLED  
Cable tray „WK“ bracket: for TLP 39 MLED

### CONSTRUCTION

Housing:	zinc coated steel, powder painted
Diffuser:	hardened glass or PC*
Mounting plate:	zinc coated steel, powder painted
Power supply:	220-240V AC/DC

\* Chemical resistance diagram available on manufacturer's website in section „Designers area“

### TECHNICAL DATA



### APPROVALS



available configurations | **INDUSTRIAL LUMINAIRES**

**TLP39**  
MLED



WATTAGE		CRI AND COLOUR TEMP.	DIFFUSER	HOUSING	OPTIONS	
210	7 W	830 CRI 80 3000 K	G hardened glass	- zinc coated steel	A3 battery backup system 3h	DALI
	11 W	840 CRI 80 4000 K	PC polycarbonate	S stainless steel 304		
	16 W			S316 stainless steel 316L		
220	22 W	956 CRI 90 5600 K				
	29 W	865 CRI 80 6500 K				
	33 W					
230	44 W					
230	49 W					
240	58 W					
240	64 W					