

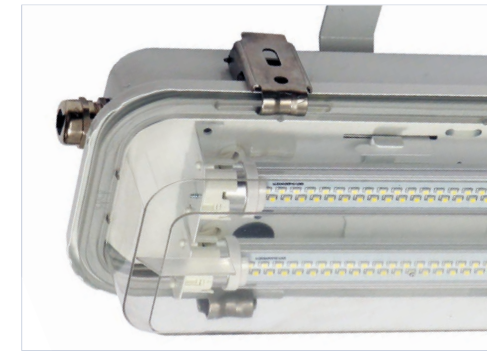
EXPLOSION PROOF

EXP03 LED

 II 3G Ex ec IIC T4 Gc
 II 3D Ex tc IIIC T65°C IP 66 /67 Dc

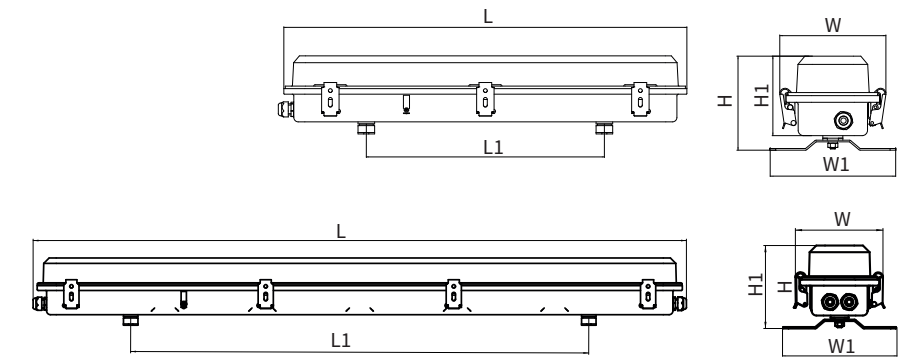


ZONES 2,22



DIMENSIONS [mm]

Type	L	L1	W	W1	H	H1
EXP 03-220/LED	728	430	159	190	119	140
EXP 03-240/LED	1336	950	147	190	119	140



APPLICATION

Dustproof and waterproof luminaire for the single sided LED tubes with G13 lamp base. The luminaire is designed for the industrial areas and facilities, also outdoor spaces with an explosion hazard of gases, vapours and flammable fogs mixed with air and inflammable dust and fibers mixed with air. **Hazardous zones: 2,22**

For areas fully exposed to the weather conditions use dedicated stainless steel version or with WN bracket.

TECHNICAL DATA

Protection class: I
 Protection degree: IP 66/67
 Power factor: > 0,95
 Ambient temperature: from -35°C to +40°C**

**dependent on used LED tubes

ELECTRIC UNIT

Cable gland: 2 x M20, 1 x blanking plug
 Cable diameter: ø 6-12 mm
 Terminal block: 2 x /3x4 mm²/

TYPE	LED TUBES LENGTH	LAMP BASE	WEIGHT (without led tubes)
EXP 03-220/LED	600	G13	3,2 kg
EXP 03-240/LED	1200	G13	4,9 kg

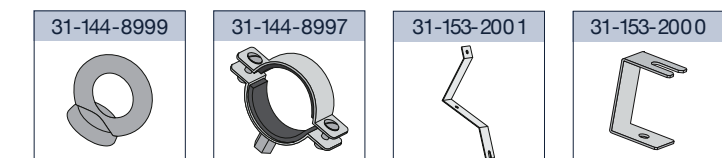
CONSTRUCTION

Housing: zinc coated steel, powder painted
 Diffuser: UV stabilized and strengthened polycarbonate *
 Diffuser clips: stainless steel
 Mounting plate: zinc coated steel, powder painted

* Chemical resistance diagram available on manufacturer's website in section „Designers area“

ADDITIONAL EQUIPMENT

Only for zinc coated steel version

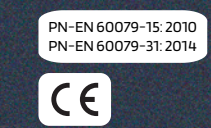


31-144-8999 eyelet sling (set 2 pcs)
31-144-8997 3/2" stainless pole bracket (set 2 pcs)
31-153-2001 slanting bracket (2 pcs set)
31-153-2000 angular bracket (2 pcs set)

TECHNICAL DATA



APPROVALS



EXPLOSION PROOF

rlt.rh.pl

REMONTOWA MEMBER OF
 LIGHTING TECHNOLOGIES REMONTOWA HOLDING S.A.

EXPLOSION PROOF | available configurations

EXP03 LED



WATTAGE	HOUSING	CABLE ENTRY	CABLE GLANDS	FIXING TYPE
220 -	- zinc coated steel	P 	10 M20 polyamide	W fixed bracket
240 -	S stainless steel 304*	PA 	11 M20 brass	WN bracket fixed to the body with rivet nuts
	S316 stainless steel 316L*	K 	13 M20 brass screen cable	H Bolt kit
		KA 	20 M25 polyamide	<i>*please select bracket W or WN</i>
		PAK 	21 M25 brass	
		23 M25 brass screen cable		